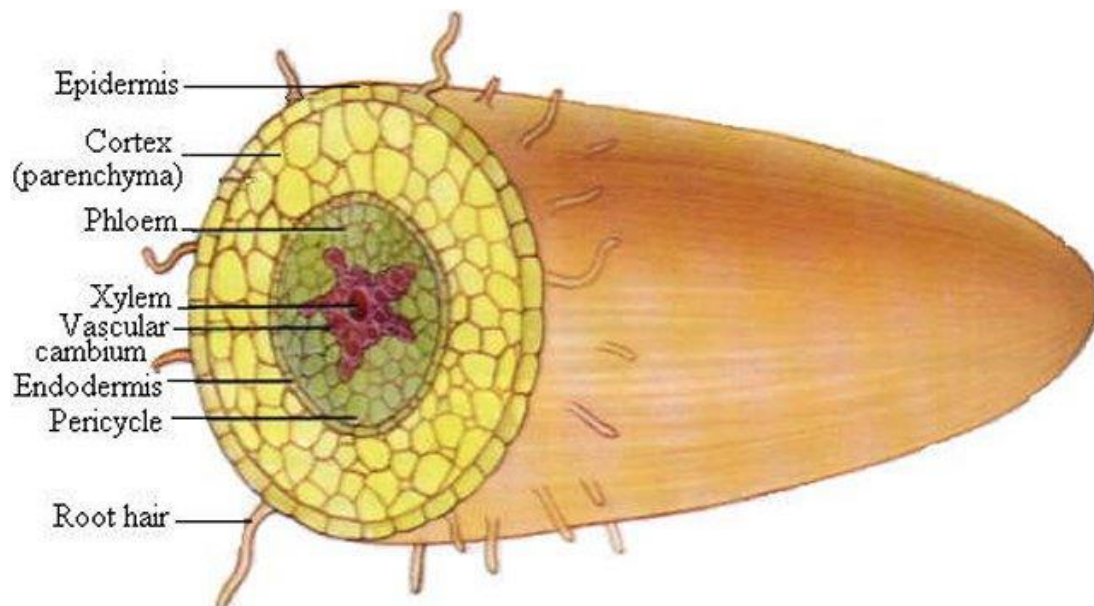


Concepts of tissue and organ- using as an example the dicotyledonous root

Introduction:

- Tissues are groups of similar cells that carry out the same function
- Organs are structures composed of different tissues that carry out one or several major functions for the body
- Organ system - Comprised of several organs that work together to bring about one major function of the body
- Tissue - xylem, phloem, parenchyma (cortex)
- Organ - leaf, stem, root

Figure 1: Diagram of T.S of root



Take a look at the video below to learn more:

https://www.youtube.com/watch?v=NUV_n4ilfrE&feature=emb_logo