

TECHNICAL DRAWING

3 Dimensional (3D) Drawings in Technical Drawing

FORMS 4/5

Assessment

1. 3D drawings are
 - a) Construction
 - b) Multi-view drawings
 - c) Orthographic
 - d) Pictorial
2. Which of the following depicts 3D drawings?
 - a) Isometric
 - b) Oblique
 - c) Perspective
 - d) All of the above
3. What is the angle of the receding line in isometric drawing?
 - a) 30°
 - b) 45°
 - c) 60°
 - d) 90°
4. The angle between the axes of isometric drawing said to be _____.
 - a) 60°
 - b) 90°
 - c) 120°
 - d) 180°

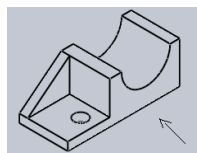


Figure 1

5. The diagram in Figure 1 above shows _____ drawing?
 - a) Isometric
 - b) Oblique
 - c) Orthographic
 - d) perspective
6. Isometric drawing is BEST used for _____ drawing.
 - a) Electrical
 - b) Solid geometry
 - c) Orthographic
 - d) Floor plan
7. In an Oblique drawing receding lines are generally drawn at _____.

- a) 30°
 - b) 45°
 - c) 60°
 - d) 90°
8. Cabinet drawing is BEST achieved when _____.
- a) $\frac{1}{2}$ the measurement is used on the receding axis
 - b) Full measurement is used on the receding axis
 - c) The receding axis is 45°
 - d) The receding axis is 60°
9. All of the following apply to perspective drawing EXCEPT
- a) It implies that there is a horizon
 - b) The viewer is far away from the object
 - c) The objects appear as the normal measurements
 - d) There is a vanishing point

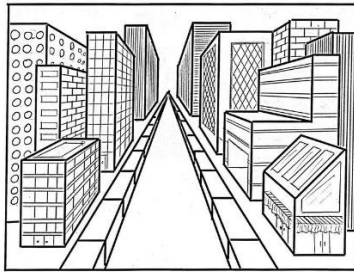


Figure 2

10. The diagram in Figure 2 above shows
- a) 1 point perspective
 - b) 2 point perspective
 - c) A drawing in oblique
 - d) A picture of a road
11. Perspective drawing is MOSTLY used for
- a) Engineering assemblies
 - b) Architectural buildings
 - c) Inside views of houses
 - d) Orthographic projection
12. What is the vanishing point in perspective drawing?
- a) Line of sight
 - b) Extreme points on the end of the horizon
 - c) The horizon line
 - d) None of the above
13. What is the line of sight?
- a) The lines drawn from the horizon to the object
 - b) The lines drawn from the object to the viewer
 - c) Lines drawn parallel to the horizon
 - d) All of the above

14. All of the following apply to 3D drawing EXCEPT it

- a) Shows 3 dimensions
- b) Aids in visualizing the finished product
- c) Gives an impression of a picture image
- d) Has multiple views

15. When is 3D drawing BEST applied?

- a) When the viewer is non-technical
- b) To show linear measurements
- c) To detect problems with the design
- d) To create 2D drawings

16.