

Home Economics

Textiles, Clothing and Fashion



Topic: The Five Major Fashion Silhouettes

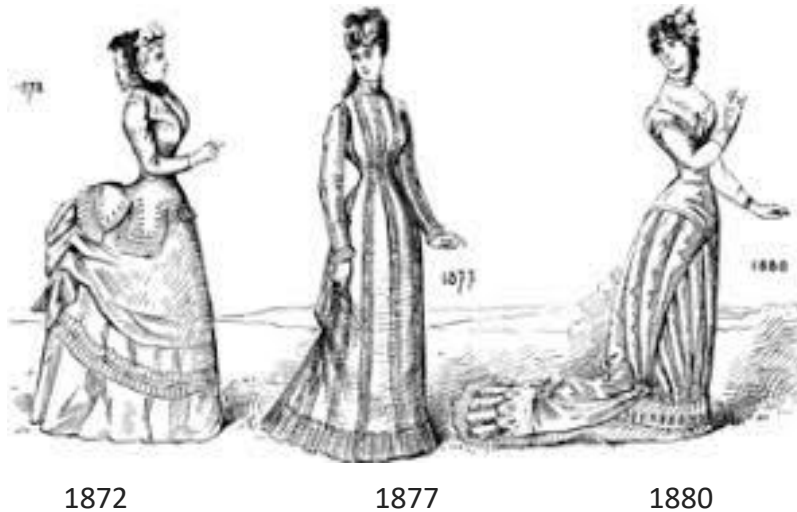
Group Level: Form Five

Instructions:

1. Read the information provided on the topic.
2. Review what you have learned by completing the worksheet.
3. Use the answer key to assess your performance.

Fashion Silhouettes (sí-loo-et)

Fashion silhouette is defined as the basic shape or outline of an outfit. Silhouettes can be used to highlight and modify a woman's shape to produce a pleasing illusion. Fashion eras, throughout time have been defined by the shape of garments as seen in the picture below.



Here are the five major fashion silhouettes.

The shape of different garments are designed to flatter different body shapes or types as well as meet the dress codes for different events. Understanding different silhouettes can help you find the most flattering fashion silhouette for your body shape/type.

1) A-line (also referred to as Triangular or Tent)

- Works well for every figure/body type.
- Emphasizes the lower half of the body but does not emphasize the hip.
- Very flattering for women who want to hide large hips.
- The flare creates an overall body shape like the letter A.
- Appropriate for any occasion.
- Great shape for all figures in particular those with a large bust.



2) Mermaid (also referred to as Fit and Flare or Trumpet)

- Intended for women who have curves that they want to highlight.
- It is fitted through the upper body to the knee. Then flares out dramatically.
- Flattering on most body shapes.
- Emphasizes leg and torso length.



3) Empire (also referred to as Baby Doll)

- The waistline is raised beneath the bust, with a skirt that may flare slightly from the raised-waist.
- This shape works well for women whose waistline is not defined.
- Perfect for covering unwanted body features such as long torso or triangle shaped.



4) Ball Gown (also referred to as Bell, Hourglass or Bouffant)

- Often associated with fairy tales and is most suited to a formal setting.
- Fitted bodice and a dramatic full, often multilayered skirt.
- The full skirt highlights the waist.
- Suitable for any body type, but best suited for those with a small waist.
- Can camouflage large hips on a pear shaped woman



5) Sheath (also referred to as Tubular, H, Shift or Column)

- Takes the shape of the natural body.
- Fits close to the body.
- Fitted waist is the focal point.
- Works well for women who have gentle to no curves.



Worksheet

1. DIRECTIONS: On the line to the right of each statement, write the silhouette that best fits the statement.

- a. Recommended for slimmer women who have gentle to no curves. _____
- b. Suitable for the figure with a thick waistline. _____
- c. Appropriate for any occasion. _____
- d. Designed for women who have curves that they want to accentuate. _____
- e. Fitted bodice and a dramatic full, often multi-layered skirt _____
- f. The full skirt helps to accentuate the waist and hide the lower body _____
- g. Fitted waist is the focal point. _____
- h. Very flattering for women who want to hide large hips _____
- i. It is fitted through the chest and torso to the knee. Then flares out dramatically. _____
- j. Perfect for covering unwanted body features _____

(10 marks)

2. Identify the fashion silhouettes in the image.



A.....



B.....



C.....

(6 marks)

Total 16 marks

Answer Key

1. DIRECTIONS: On the line to the right of each statement, write the silhouette that best fits the statement.

- a. Recommended for slimmer women who have gentle to no curves. **Sheath**
- b. Suitable for the figure with a thick waistline. **Empire**
- c. Appropriate for any occasion. **A Line**
- d. Designed for women who have curves that they want to accentuate. **Mermaid**
- e. Fitted bodice and a dramatic full, often multi-layered skirt. **Ball Gown**
- f. The full skirt helps to accentuate the waist and hide the lower body. **Ball Gown**
- g. Fitted waist is the focal point. **Sheath**
- h. Very flattering for women who want to hide large hips. **A Line**
- i. It is fitted through the chest and torso to the knee. Then flares out dramatically. **Mermaid**
- j. Perfect for covering unwanted body features. **Empire**

(1 mark for each correct response)

(10 mark)

2. The fashion silhouettes in the images are:

- A. **Ball Gown**
- B. **A Line**
- C. **Empire**

(2 mark for each correct identification)

(6 marks)

Total 16 marks

14 – 16 Excellent 11 – 13 Good
10 and under – Review information and try again

References

Websites:

<https://www.leaf.tv/articles/types-of-silhouettes/>

<https://sewguide.com/dress-silhouettes/>

IMAGES:

Black Silhouette

[https://upload.wikimedia.org/wikipedia/commons/c/c1/Portrait of Mary Humphreys %284672629%29.jpg](https://upload.wikimedia.org/wikipedia/commons/c/c1/Portrait_of_Mary_Humphreys_%284672629%29.jpg)

A-Line dress

1. [https://upload.wikimedia.org/wikipedia/commons/4/40/Cocktail dress.jpg](https://upload.wikimedia.org/wikipedia/commons/4/40/Cocktail_dress.jpg)

2. [https://upload.wikimedia.org/wikipedia/commons/c/c1/Evening dress MET 65.14.1 front bw.jpeg](https://upload.wikimedia.org/wikipedia/commons/c/c1/Evening_dress_MET_65.14.1_front_bw.jpeg)

Mermaid dress

[https://upload.wikimedia.org/wikipedia/commons/1/11/Mermaid dress in Second Life 2.png](https://upload.wikimedia.org/wikipedia/commons/1/11/Mermaid_dress_in_Second_Life_2.png)

License [CC By SA 2.0](https://creativecommons.org/licenses/by-sa/2.0/)

Empire dress

1. [https://upload.wikimedia.org/wikipedia/commons/thumb/4/46/Runway show pexels.jpg/800px-Runway show pexels.jpg](https://upload.wikimedia.org/wikipedia/commons/thumb/4/46/Runway_show_pexels.jpg/800px-Runway_show_pexels.jpg)

2. [https://upload.wikimedia.org/wikipedia/commons/c/c8/Wedding dress MET 29.1157 threequarters bw.jpeg](https://upload.wikimedia.org/wikipedia/commons/c/c8/Wedding_dress_MET_29.1157_threequarters_bw.jpeg)

Ball gown

1. [https://upload.wikimedia.org/wikipedia/commons/1/1d/Ball gown MET DT7578.jpg](https://upload.wikimedia.org/wikipedia/commons/1/1d/Ball_gown_MET_DT7578.jpg)

2. [https://upload.wikimedia.org/wikipedia/commons/thumb/2/23/Winterhalter Elisabeth.jpg/197px-Winterhalter Elisabeth.jpg](https://upload.wikimedia.org/wikipedia/commons/thumb/2/23/Winterhalter_Elisabeth.jpg/197px-Winterhalter_Elisabeth.jpg)

Sheath dress

<https://freessvg.org/img/Four-Colorful-Women.png>

Fashion Era dresses

[https://upload.wikimedia.org/wikipedia/commons/thumb/1/1b/Modification de la taille1872 1877 1880.gif/320px-Modification de la taille1872 1877 1880.gif](https://upload.wikimedia.org/wikipedia/commons/thumb/1/1b/Modification_de_la_taille1872_1877_1880.gif/320px-Modification_de_la_taille1872_1877_1880.gif)